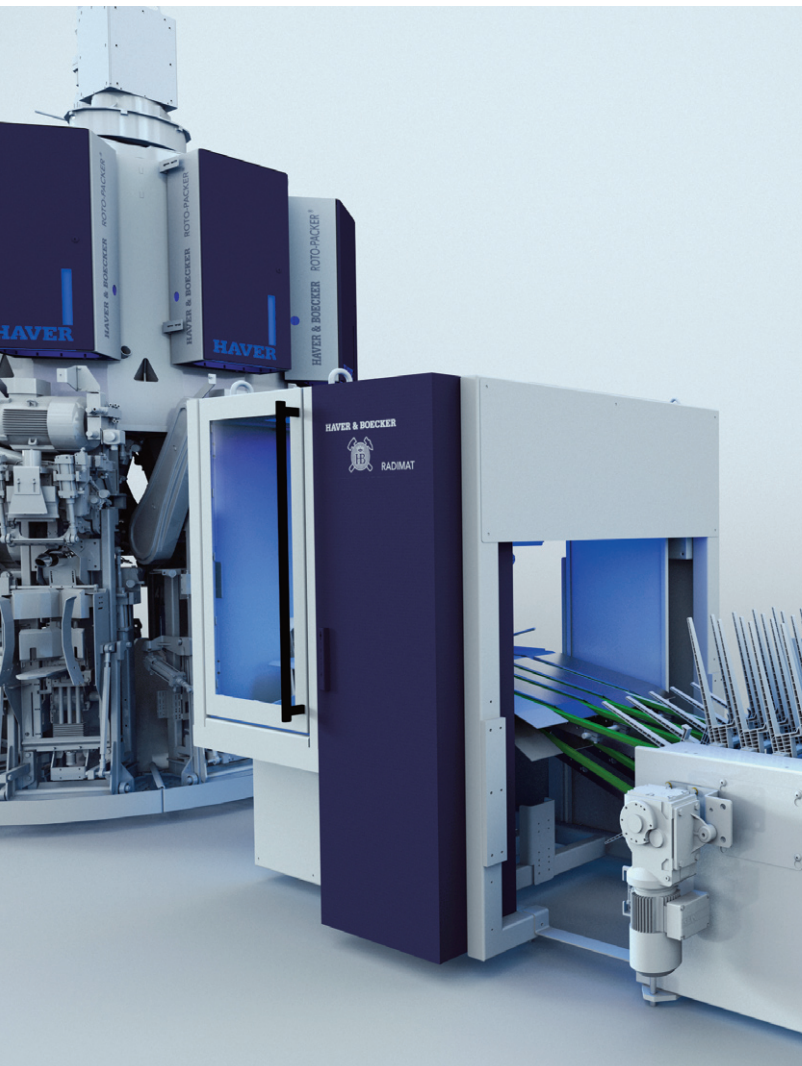


**HAYER & BOECKER**



DIE MASCHINENFABRIK

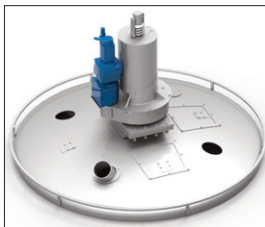
**PERFORMANCE<sup>+</sup> KITS**  
FOR YOUR COMPLETE  
ROTATING PACKING SYSTEM



HAYER & BOECKER



## 1 Feeding and dosing to the ROTO-PACKER® incl. main drive



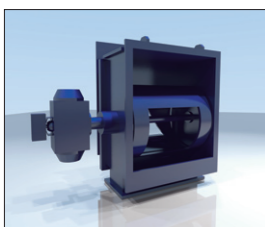
### 1.1 Rotary Drive

**IMPROVEMENT:**  
„stop after ¼ turn“

**YOUR ADVANTAGES:**

- improving your standards for health and safety
- less wear for your equipment

**VERSION:**  
ROTO-PACKER®  
(RC-RS-RSE-RCC)



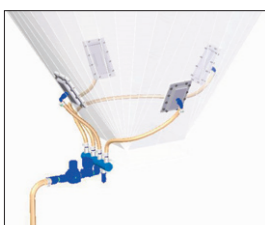
### 1.2 Feeding of ROTO-PACKER® for Cement only

**IMPROVEMENT:**  
dosing through a roller gate

**YOUR ADVANTAGES:**

- improving your standards for health and safety
- less wear for your equipment
- reduction of your product losses
- reduction of your maintenance costs
- increase your machine availability

**VERSION:**  
ROTO-PACKER®  
(RC-RS-RSE-RCC-RVT)  
(Flow control gate vertical/horizontal)



### 1.3 Silo-coni aeration

**IMPROVEMENT:**  
continuous material flow after each restart

**YOUR ADVANTAGES:**

- reduction of your operational and set-up costs
- increase your machine availability

**VERSION:**  
ROTO-PACKER®  
(RC-RS-RSE-RCC-RVT)



### 1.4 ROTO-FILL

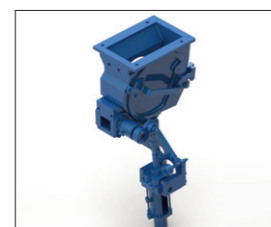
**IMPROVEMENT:**  
airless filling of the ROTO-PACKER® silo

**YOUR ADVANTAGES:**

- improving your standards for health and safety
- less wear for your equipment
- reduction of your product losses
- reduction of your maintenance costs
- reduction of your cleaning expenses
- increase your output
- increase your machine availability
- clean and compact bags
- precisely weighted bags

**VERSION:**  
ROTO-PACKER®  
(RC-RS-RSE-RCC-RVT)

## 2 Filling and dosing systems of the ROTO-PACKER®



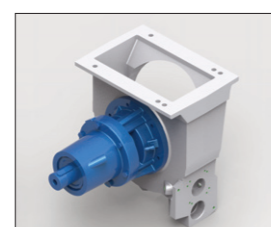
### 2.1 ROTO-LOCK®

**IMPROVEMENT:**  
dosing system, clean dosing

**YOUR ADVANTAGES:**

- improving your standards for health and safety
- less wear for your equipment
- reduction of your product losses
- reduction of your maintenance costs
- reduction of your cleaning expenses
- increase your machine availability
- clean and compact bags
- precisely weighted bags

**VERSION:**  
ROTO-PACKER®  
(RS-RSE-RCC-RVT)



### 2.2 Impeller shaft assembly (air flush sealing)

**IMPROVEMENT:**  
sealing through air flush

**YOUR ADVANTAGES:**

- less wear for your equipment
- reduction of your maintenance costs

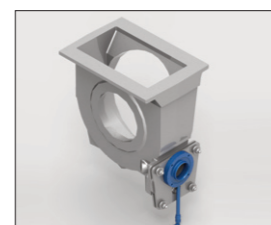
**VERSION:**  
ROTO-PACKER®  
(RC-RS-RSE)

### 2.3 Ring aeration

**IMPROVEMENT:**  
controlled aeration during filling

**YOUR ADVANTAGES:**

- less wear for your equipment
- faster processing, better control and easier operation of your process
- increase your output
- reduction of your operational and set-up costs



**VERSION:**  
ROTO-PACKER®  
(RC-RS-RSE-RCC-RVT)



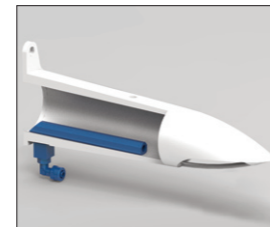
### 2.4 Fast emptying device

**IMPROVEMENT:**  
residual emptying of the ROTO-PACKER® through spillage return funnel

**YOUR ADVANTAGES:**

- improving your standards for health and safety
- reduction of your product losses
- increase your machine availability

**VERSION:**  
ROTO-PACKER®  
(RS-RSE-RCC-RVT)  
Valve for the residue emptying



### 2.5 Filling tube with optimized material guiding

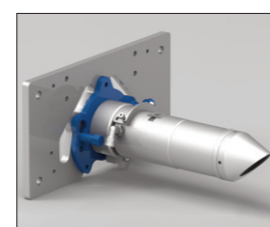
**IMPROVEMENT:**

cast filling tube with adaptable blow-out-device

**YOUR ADVANTAGES:**

- less wear for your equipment
- reduction of your product losses
- reduction of your maintenance costs
- reduction of your cleaning expenses
- reduction of your operational and set-up costs
- increase your machine availability
- clean and compact bags

**VERSION:**  
ROTO-PACKER®  
(RC-RS-RSE-RCC-RVT)



### 2.6 Changing adapter for filling tube

**IMPROVEMENT:**  
unit with quick fastener

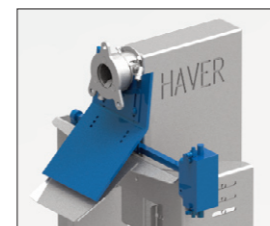
**YOUR ADVANTAGES:**

- reduction of your operational and set-up costs
- increase your machine availability

**VERSION:**  
ROTO-PACKER®  
(RS-RSE-RCC-RVT)



## 3 Improvement of bag discharge



### 3.1 Spillage return flap

**IMPROVEMENT:**  
spillage discharge directly into the spillage return funnel

**YOUR ADVANTAGES:**

- reduction of your product losses
- reduction of your maintenance costs
- reduction of your cleaning expenses
- clean and compact bags

**VERSION:**  
ROTO-PACKER®  
(RC-RS-RSE-RCC-RVT)



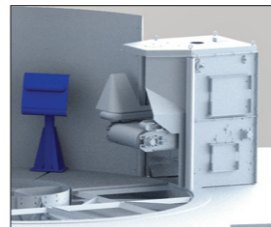
### 3.2 Saddle-in-grate design

**IMPROVEMENT:**  
reduced dust deposit area

**YOUR ADVANTAGES:**

- reduction of your cleaning expenses
- clean and compact bags

**VERSION:**  
ROTO-PACKER®  
(RC-RS-RSE-RCC-RVT)



### 3.3 Two step bag discharge

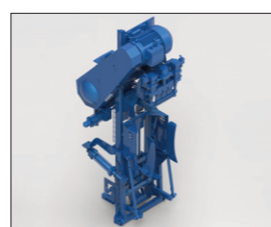
**IMPROVEMENT:**  
faster valve closure

**YOUR ADVANTAGES:**

- less wear for your equipment
- reduction of your product losses
- reduction of your cleaning expenses
- compact bags for a better transport
- clean and compact bags

**VERSION:**  
ROTO-PACKER®  
(RS-RSE-RCC-RVT)

## 4 Conversion to valve sealing



### 4.1 Seal closing device

**IMPROVEMENT:**  
clean filling, higher weight-accuracy, less wear

**YOUR ADVANTAGES:**

- improving your standards for health and safety
- less wear for your equipment
- reduction of your product losses
- reduction of your maintenance costs
- reduction of your cleaning expenses
- compact bags for a better transport
- clean and compact bags
- precisely weighted bags

**VERSION:**  
ROTO-PACKER®  
(RSE-RCC-RVT)



## 5 Extension of filling spout



### 5.1 ROTO-PACKER® RSE

**IMPROVEMENT:**  
more filling spouts

**YOUR ADVANTAGES:**

- increase your output

**VERSION:**  
ROTO-PACKER®  
(RSE)

### Performance categories:

- increase speed / output
- save more energy
- reduce maintenance costs
- increase machine availability

### 5.2 ROTOCLASSIC® RCC

**IMPROVEMENT:**  
more filling spouts

**YOUR ADVANTAGES:**

- increase your output



### 5.3 ROTO-PACKER® RVT

**IMPROVEMENT:**  
more filling spouts

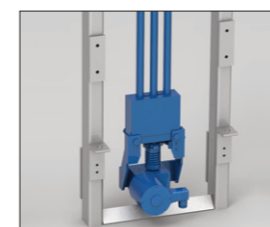
**YOUR ADVANTAGES:**

- increase your output



**VERSION:**  
ROTO-PACKER®  
(RVT)

## 6 Bag handling



### 6.1 Automatic saddle-high adjustment

**IMPROVEMENT:**  
automatic positioning of the bags

**YOUR ADVANTAGES:**

- faster processing, better control and easier operation of your process
- increase your output
- reduction of your operational and set-up costs
- increase your machine availability

**VERSION:**  
ROTO-PACKER®  
(RC only pneumatic)  
(RS, RSE, RCC  
pneumatic and  
motor-driven, RVT)

## 7 Automatic bag applicator

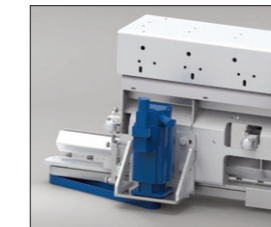


### 7.1 RADIMAT®

**IMPROVEMENT:**  
automatic bag application

**YOUR ADVANTAGES:**

- improving your standards for health and safety
- faster processing, better control and easier operation of your process
- reduction of your product losses
- reduction of your cleaning expenses
- increase your output
- reduction of your operational and set-up costs
- increase your machine availability

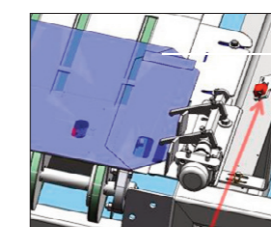


### 7.2 SEW servo bag shooting

**IMPROVEMENT:**  
longterm available spare parts

**YOUR ADVANTAGES:**

- increase your output
- reduction of your operational and set-up costs
- increase your machine availability

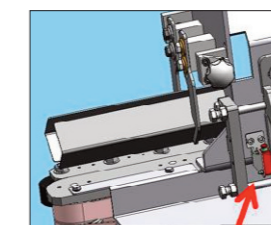


### 7.3.1 Conversion to special sensoric

**IMPROVEMENT:**  
change lightning sensor to ultrasonic very quick

**YOUR ADVANTAGES:**

- increase your output
- reduction of your operational and set-up costs
- increase your machine availability

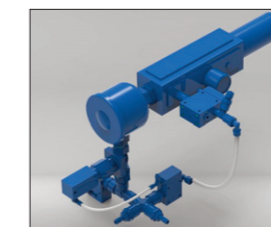


### 7.3.2 Conversion to special sensoric

**IMPROVEMENT:**  
change lightning sensor to ultrasonic

**YOUR ADVANTAGES:**

- increase your output
- reduction of your operational and set-up costs

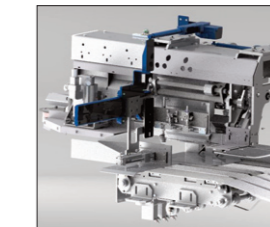


### 7.4 Vacuum generator/-converter

**IMPROVEMENT:**  
replacement of the vacuum pump

**YOUR ADVANTAGES:**

- reduction of your maintenance costs
- increase your machine availability

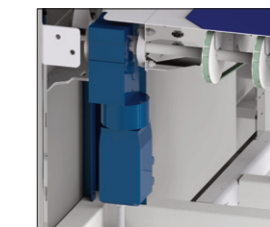


### 7.5 Automatic bag size adjustment

**IMPROVEMENT:**  
precise and fast adaptation for the bag size

**YOUR ADVANTAGES:**

- faster processing, better control and easier operation of your process
- increase your output
- reduction of your operational and set-up costs
- increase your machine availability

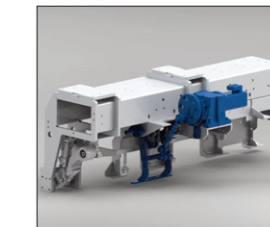


### 7.6 SEW servo bundle transport

**IMPROVEMENT:**  
drive motor with servo amplifier

**YOUR ADVANTAGES:**

- availability of spare parts

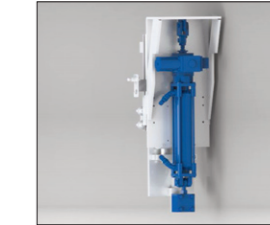


### 7.7 Conversion from normal to high capacity

**IMPROVEMENT:**  
faster empty-bag-seating through a servo drive instead of the existing pneumatic cylinder

**YOUR ADVANTAGES:**

- increase your output
- increase your machine availability



### 7.8 Lifting table

**IMPROVEMENT:**  
robust lifting cylinder

**YOUR ADVANTAGES:**

- less wear for your equipment
- increase your output
- reduction of your operational and set-up costs
- increase your machine availability



### 7.9 New rip belt for bag transport

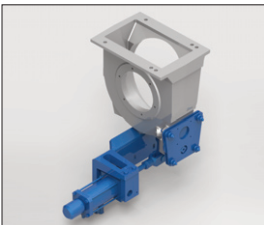
**IMPROVEMENT:**  
better guidance through a larger cross section

**YOUR ADVANTAGES:**

- faster processing, better control and easier operation of your process
- availability of spare parts



## 8 Reinforcement of packing machine (RS only)



### 8.1 Slide valve

**IMPROVEMENT:**  
2-point suspension

**YOUR ADVANTAGES:**  
- increase your machine availability

P+ RP 081

**VERSION:**  
ROTO-PACKER® (RS)



### 8.2 Reinforced bag chair

**IMPROVEMENT:**  
more rigidity

**YOUR ADVANTAGES:**  
- reduction of your maintenance costs  
- increase your machine availability

P+ RP 082

**VERSION:**  
ROTO-PACKER® (RC-RS)

## 9 Pneumatic control



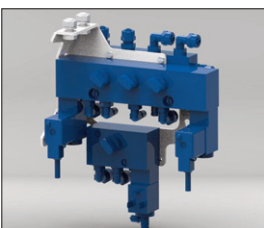
### 9.1 Intelligent aeration MEC® 4.0 necessary

**IMPROVEMENT:**  
product dependent

**YOUR ADVANTAGES:**  
- improving your standards for health and safety  
- faster processing, better control and easier operation of your process  
- reduction of your maintenance costs  
- reduction of your operational and set-up costs  
- increase your machine availability

P+ RP 091

**VERSION:**  
ROTO-PACKER®  
(RC-RS-RSE-RCC-RVT)



### 9.2 Fine throttle block

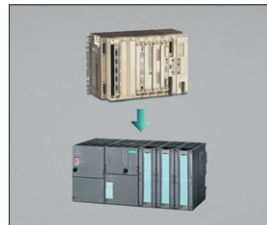
**IMPROVEMENT:**  
manual adjustable aeration unit

**YOUR ADVANTAGES:**  
- reduction of your maintenance costs  
- reduction of your operational and set-up costs  
- increase your machine availability

P+ RP 092

**VERSION:**  
ROTO-PACKER®  
(RC-RS-RSE-RCC)

## 10 Operation and control



### 10.1 S5 / S7 controls

**IMPROVEMENT:**  
setup with additional features

**YOUR ADVANTAGES:**  
- faster processing, better control and easier operation of your process  
- availability of spare parts

P+ RP 101



### 10.2 MEC® 4.0

**IMPROVEMENT:**  
easy to understand in multiple languages

**YOUR ADVANTAGES:**  
- faster processing, better control and easier operation of your process

P+ RP 102

**VERSION:**  
ROTO-PACKER®  
(RC-RS-RSE-RCC)  
(all older MEC® versions as well as SPS/mechanical weigher)

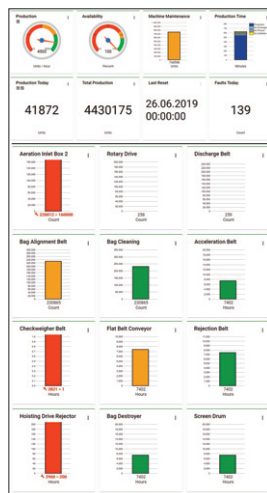


### 10.3 Touchpanel TP 104 (requirement S7 controls)

**IMPROVEMENT:**  
touch-operation, color display

**YOUR ADVANTAGES:**  
- faster processing, better control and easier operation of your process

P+ RP 103



### 10.4 Quattro System Monitoring

**IMPROVEMENT:**  
permanent online process monitoring

**YOUR ADVANTAGES:**  
- faster processing, better control and easier operation of your process  
- increase your output  
- increase your machine availability

P+ RP 104



### 10.5 Remote

**IMPROVEMENT:**  
possible tele-service with HAVER & BOECKER experts

**YOUR ADVANTAGES:**  
- faster processing, better control and easier operation of your process  
- increase your machine availability

P+ RP 105



### 10.6 Conversion to WiFi

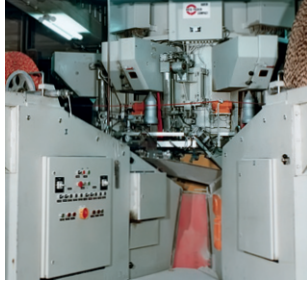
**IMPROVEMENT:**  
WiFi connection

**YOUR ADVANTAGES:**  
- faster processing, better control and easier operation of your process  
- reduction of your maintenance costs  
- reduction of your operational and set-up costs  
- increase your machine availability

P+ RP 106

# THE PERFORMANCE<sup>+</sup> KITS PROCESS IS AS FOLLOWS:

PERFORMANCE+ KITS are available for the following machine types available:



The HAVER & BOECKER  
ROTO-PACKER® Type RC

1975 – 1980



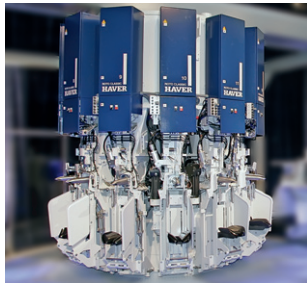
The HAVER & BOECKER  
ROTO-PACKER® Type RS

1980 – 1985



The HAVER & BOECKER  
ROTO-PACKER® Type RSE

1983 – 2008



The HAVER & BOECKER  
ROTO-PACKER® Type RCC

2008 – 2016



The HAVER & BOECKER  
ROTO-PACKER® Type RVT

since 2017

- Step 1: Contact us and together we'll thoroughly analyze the requirements for your existing system.
- Step 2: Our experts will configure a customized retrofitting for your system and send you a quotation.
- Step 3: Together we will plan the installation, system start-up and final approval.
- Step 4: Together with your operating personnel we will put the plant into operation, fully backed up by our full support, spare parts and consulting. On our Performance+ kits you receive a warranty of 12 months for the new parts.

## **HAYER & BOECKER OHG**

Carl-Haver-Platz 3, 59302 Oelde, Germany

Phone: +49 (0) 2522 30-0

E-mail: [haver@haverboecker.com](mailto:haver@haverboecker.com)

[www.haverboecker.com](http://www.haverboecker.com)

## **HAYER Cement**

Sales

Uwe Tripmaker

Phone: +49 (0) 2522 30-430

Mobile: +49 (0) 1752930318

Fax: +49 (0) 2522 30-535

E-mail [u.tripmaker@haverboecker.com](mailto:u.tripmaker@haverboecker.com)

Jens Strotjohann

Phone: +49 (0) 2522 30-8523

Mobile: +49 (0) 152 36298995

Fax: +49 (0) 2522 30-535

E-mail: [j.strotjohann@haverboecker.com](mailto:j.strotjohann@haverboecker.com)